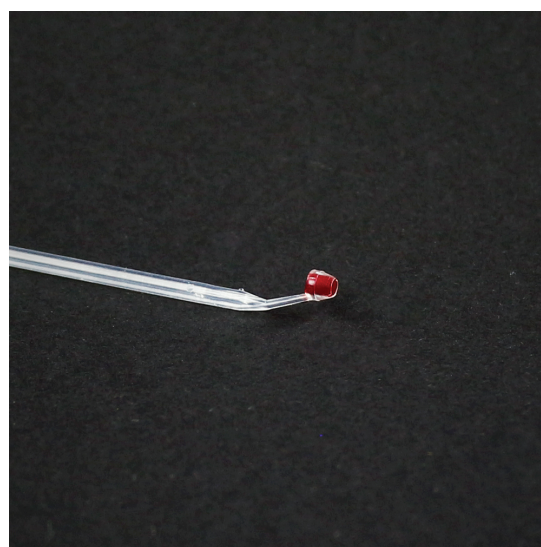


Mini-Tip™

Manual & Technical Specification



Mini-Tip™ Q type

Ideal for small volume collection

Optimal for Point-of-Care Tests

Available in 10µl and 20µl volumes



PATENT

KR Patent #30-1061718, 10-2019-0046655, 10-2019-0083932, 202010318065-6, 16/854,287,

Additional patents may be issued and / or pending in other country.



<http://www.aimbio.co.kr/>



Mini-Tip Q type Specification

- This product is excellent for easy collection of Whole blood samples for Point Of Care Test (POCT)
- hold the collection part of this product horizontally and bring it to the sample, the sample is collected by a capillary action.
- Mini-Tip is available in a variety of sizes and options.

Physical characteristics (10µl):

Volume: 10µl

Tip

Material: Polystyrene

Total length: 80.0mm

Length of capillary end: 3.28mm

Package: customized available

Operating and storage temperature range:

Room Temperature.

Physical characteristics (20µl):

Volume: 20µl

Tip

Material: Polystyrene

Total length: 80.0mm

Length of capillary end: 7.0mm

Package: customized available

Operating and storage temperature range:

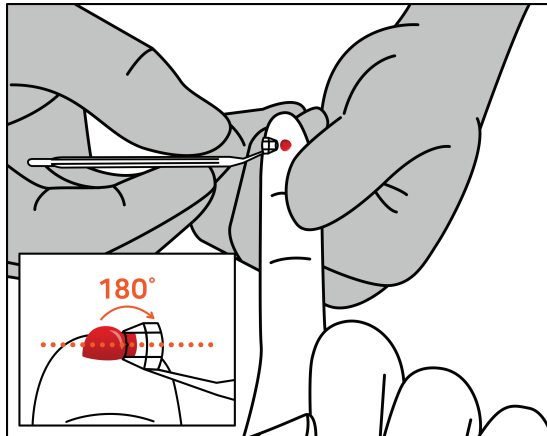
Room Temperature.

Mini-Tip™

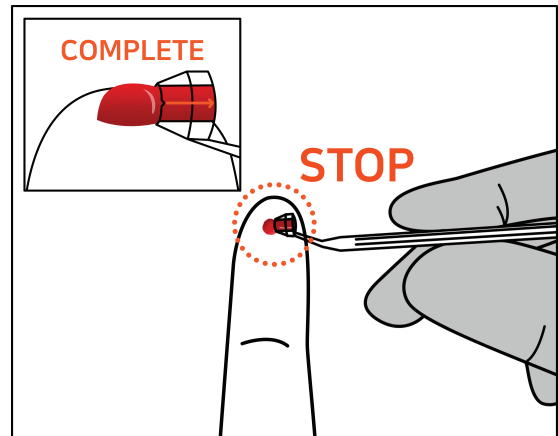
Manual & Technical Specification



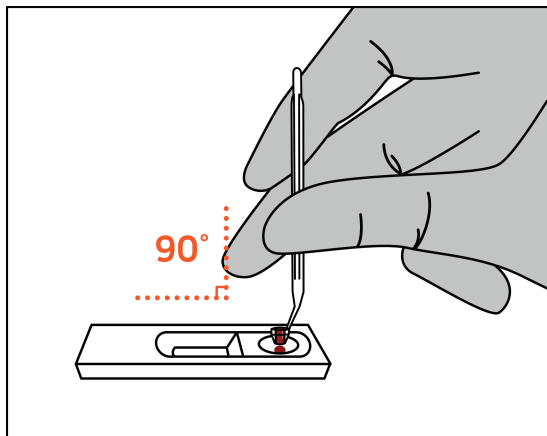
Usage Instructions



1. Hold the Mini-Tip **horizontally** and collect the samples using capillary action.
(The tester shall not block the tip hole.)



2. Draw the whole blood sample in through the end of the capillary tip and in the Mini-Tip.



3. Set the sample collected at a right angle (90°) based on the diagnostic kit and dot the sample.

Mini-Tip™

Manual & Technical Specification



CAUTION

- ※ It is recommended to send blood out immediately as the risk of clotting may occur over time after collecting blood.
- ※ Disposable medical device. Dispose of used products in a safe place in accordance with relevant laws and regulations as there is a risk of infection. (Prohibit re-use)
- ※ Dispose of used products, and store unused products in a sealed.

Volume test data

Sample: D.W.
Unit: μl

Items	10 μl			20 μl		
Test	After Capillary	After Emission	Emission Volume	After Capillary	After Emission	Emission Volume
MIN	10.1	0.0	9.2	18.8	0.1	18.5
MAX	12.8	1.1	12.8	21.8	2.2	21.6
CENTER	12.0	0.0	11.6	20.2	0.4	19.6
RANGE	2.7	1.1	3.6	3.0	2.1	3.1
AVE	11.47	0.18	11.29	20.21	0.63	19.58
STD	1.01	0.35	1.13	0.78	0.53	0.75
CV (%)	8.84	194.95	9.97	3.88	83.90	3.84

- * The drop volume results may vary depending on the viscosity of the sample.
- * This product has been optimized to deal with whole blood



Ordering Information

Cat No.	Description	Packing
MTQ0010	Mini-Tip Q type 10μl	Customized
MTQ0020	Mini-Tip Q type 20μl	

101-903, Digital Empire 2, Sinwon-ro 88,
Yeongtong-gu, Suwon-si, Gyeonggi-do 16681, South Korea

E-MAIL : aimbio01@outlook.com

TEL : +82 31-695-8463

FAX : +82 31-695-8468

Business Registration Number : 135-86-19357

Copyrights 2010 by AIM All Rights Reserved.